

SHOULDER REPLACEMENTS (Total shoulder replacement, Reverse total shoulder replacement)

- ▶ **SJOG WEXFORD MEDICAL CENTRE**
Suite 15, 3 Barry Marshall Parade,
Murdoch WA 6150
- ▶ **MURDOCH SQUARE**
Suite 205, 44 Barry Marshall Parade,
Murdoch WA 6150
- ▶ **SJOG MT LAWLEY MEDICAL CENTRE**
Suite 113, Ellesmere Road,
Mt Lawley WA 6050

Shoulder replacements are used to alleviate pain and restore function for people with arthritis. Osteoarthritis is a disease which causes pain and loss of normal shoulder movement.



Normal shoulder

OPERATIVE MANAGEMENT

When non-operative methods of treatment fail to provide adequate relief, total shoulder replacement is considered. The primary purpose of the operation is to relieve pain. The secondary aim is to increase your range of motion. The extent of improvement in your range of motion will depend

on the severity of your pre-operative condition, the length of time you have had the problem, the range of motion of your shoulder before the surgery and your commitment to the postoperative rehabilitation.

TOTAL SHOULDER REPLACEMENT

Total shoulder replacement is the replacement of the ball and socket joint. This replacement can be used if you have arthritis and intact shoulder tendons.



Narrowed joint space
(indicating loss of surface
cartilage)



Anatomic shoulder
replacement

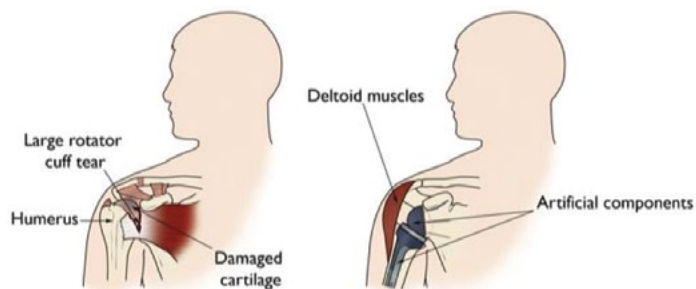
YOUR OPERATION

The operation involves coming into hospital for 2 to 4 days. Under a general anaesthetic, an incision is made from the shoulder down the front of the arm through which the joint is surgically replaced.

The ball of the humerus is replaced by a metallic head and stem. The socket is replaced with a plastic prosthesis that is usually cemented into the bone. The surgeon will use the ones that best fit your bones at the time of surgery. The joint will then be put through a series of movements to make sure it is stable. Your wound is then closed and you are placed in a sling. You will return to the ward and commence your rehabilitation.

REVERSE TOTAL SHOULDER REPLACEMENT

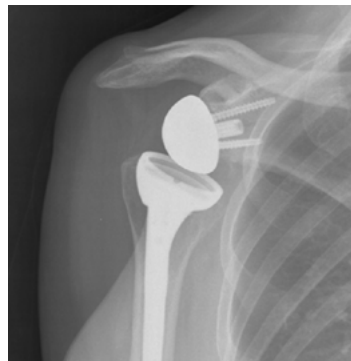
You may be a candidate for a reverse shoulder replacement if your shoulder tendons are torn and you have arthritis. In this replacement we reverse the ball and cup configuration of the shoulder to allow the deltoid muscle to replace the function of the deficient tendons.



<https://orthoinfo.aaos.org/en/treatment/reverse-total-shoulder-replacement/>



Shoulder arthritis with high riding ball due to loss of tendon above shoulder joint



Reverse shoulder replacement

Reverse shoulder replacements are also commonly used for shoulder fractures after trauma that are not reconstructable or where the tendons around the shoulder are badly torn.



COMPLICATIONS

Complications related to the surgery are rare. Some of the surgical risks include infection, nerve and blood vessel damage, fracture at the time of surgery, dislocation, loosening of the prosthesis, stiffness and ongoing pain. Some of these complications require revision surgery. A general anaesthetic and a regional pain block are used at the time of surgery and there are risks related to this which your anaesthetist will discuss with you.

RECOVERY AND REHABILITATION

You will spend between 2 and 4 days in hospital and then be discharged home or to a rehabilitation hospital if you require ongoing assistance. X-rays and blood tests will be done after the surgery. Physiotherapy will start the day after your surgery and will focus on mobilising your upper limb. The use of a sling will aid in your recovery and can be worn up to 6 weeks after surgery as guided by your surgeon and physiotherapist. Patients are able to return to driving approximately 8 weeks after surgery.

For further information ask your surgeon or refer to frequently asked questions about shoulders on our website www.orthopaedicswa.com.au

JOINT REGISTRY

The Australian National Joint Registry may contact you to collect information about your operation. This is a useful part of monitoring how shoulders perform over time.

PHONE: 08 9312 1135 • FAX: 08 9332 1187

www.orthopaedicswa.com.au